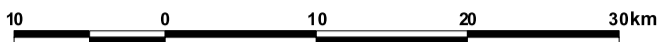




MARY RIVER CATCHMENT VEGETATION COVER



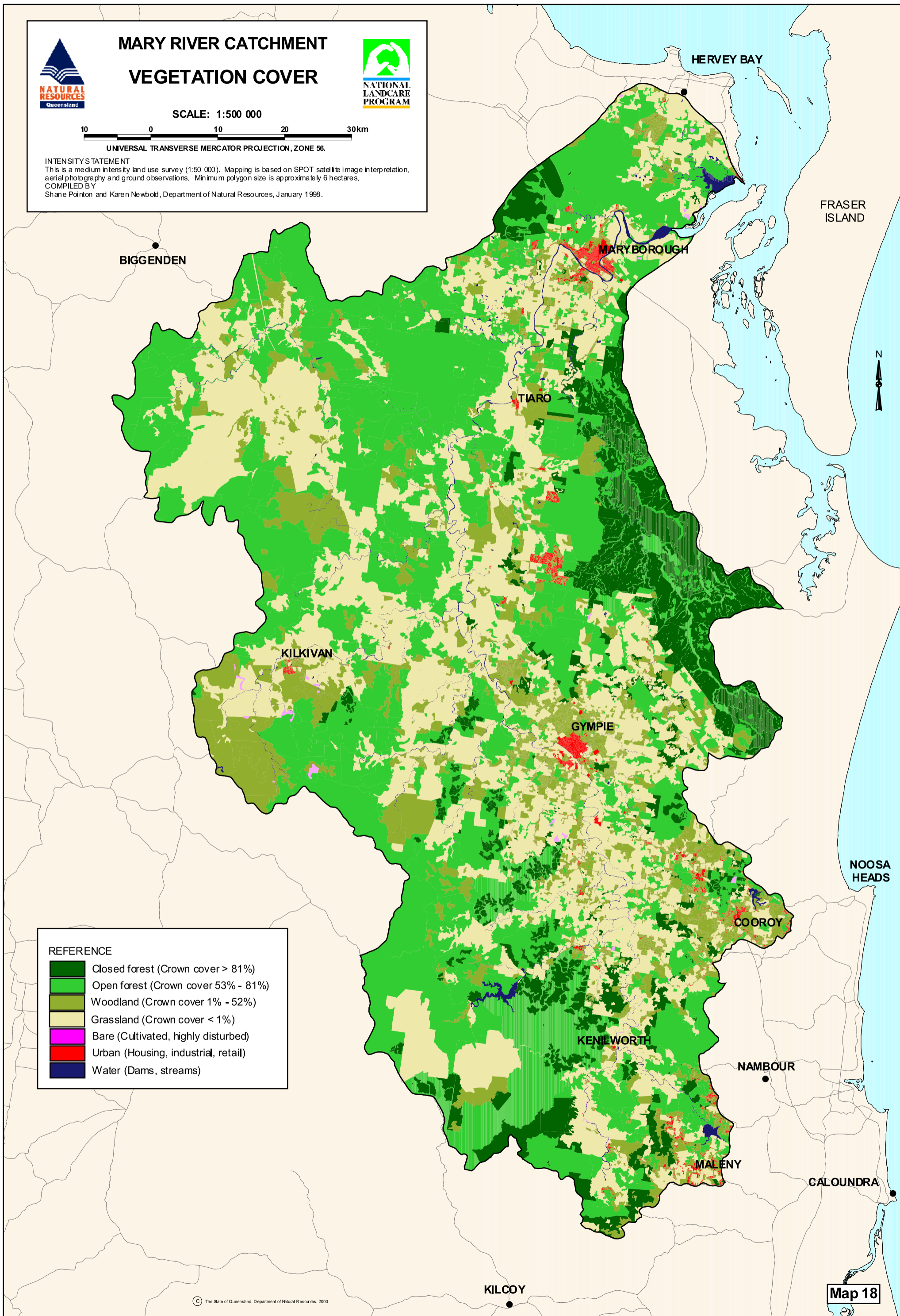
SCALE: 1:500 000









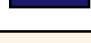
UNIVERSAL TRANSVERSE MERCATOR PROJECTION, ZONE 56.

INTENSITY STATEMENT

This is a medium intensity land use survey (1:50 000). Mapping is based on SPOT satellite image interpretation, aerial photography and ground observations. Minimum polygon size is approximately 6 hectares.
COMPILED BY
Shane Pointon and Karen Newbold, Department of Natural Resources, January 1998.



REFERENCE

-  Closed forest (Crown cover > 81%)
-  Open forest (Crown cover 53% - 81%)
-  Woodland (Crown cover 1% - 52%)
-  Grassland (Crown cover < 1%)
-  Bare (Cultivated, highly disturbed)
-  Urban (Housing, industrial, retail)
-  Water (Dams, streams)